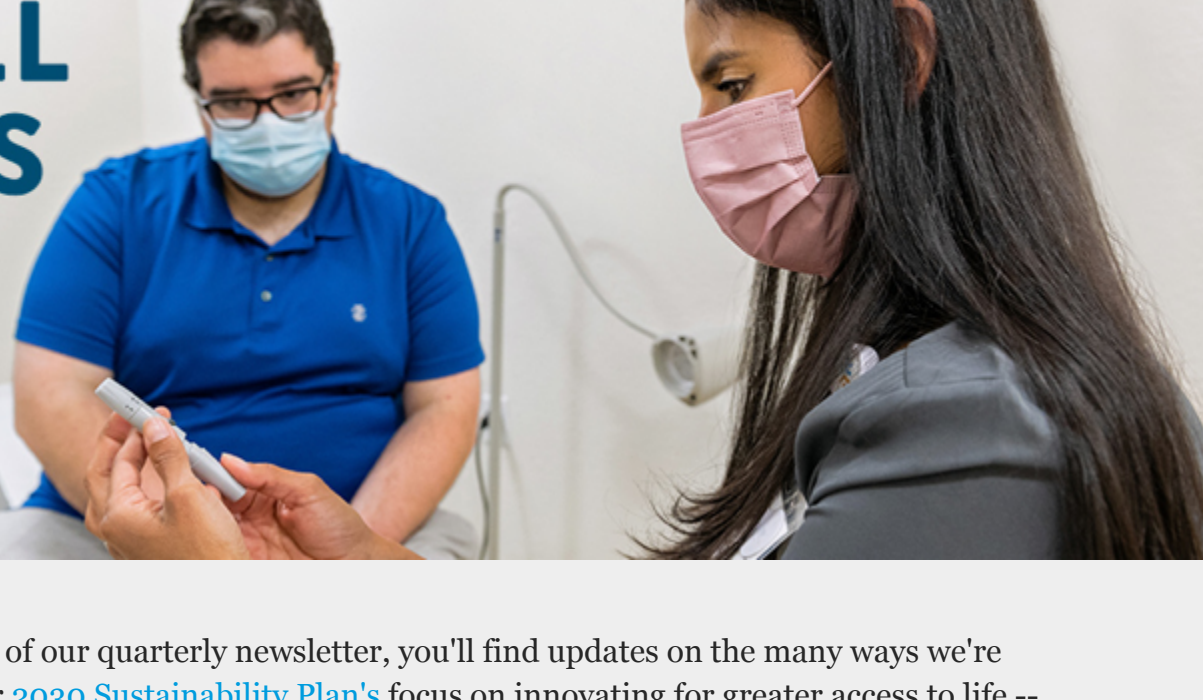


IT ALL ADDS UP

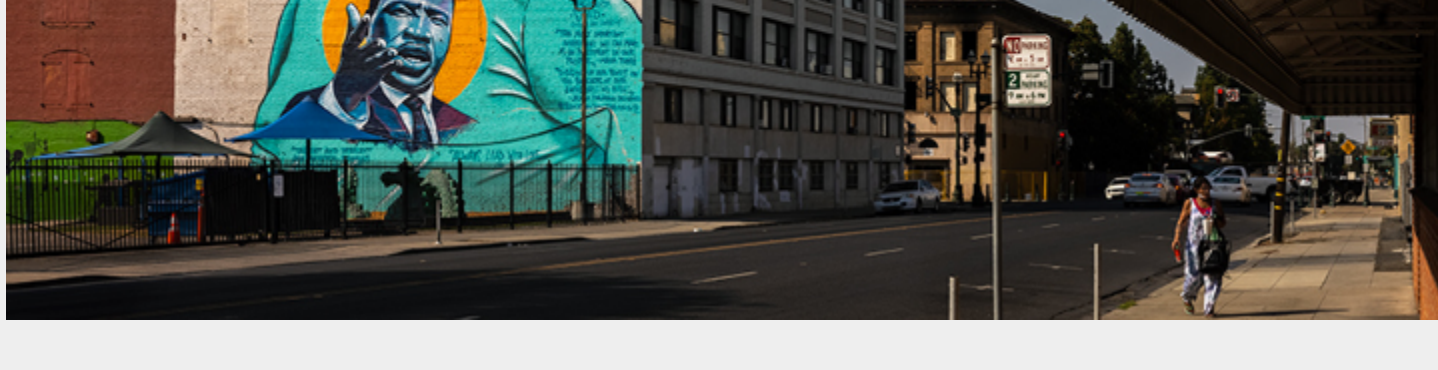


In this issue of our quarterly newsletter, you'll find updates on the many ways we're bringing our [2030 Sustainability Plan's](#) focus on innovating for greater access to life -- from our technologies for COVID, diabetes, heart disease and Parkinson's, to a new global effort to tackle malnutrition.

Advancing health equity is another key strategy for expanding access and affordability in health, and our revamped Future Well Communities program is a pioneering example. Launched in 2019 in Stockton, Calif., we've collaborated with partners on the ground to refine efforts to address health disparities -- below you'll find updates on progress to remove the everyday barriers that prevent people with diabetes from living healthy.

All of this work ladders up to our 2030 ambition to improve the lives of more than 3 billion people by decade's end -- reaching 1 billion more than we do today, each year.

As always, we welcome your [feedback](#). And please feel free to forward this newsletter to others; they can sign up to receive it directly [here](#).



TOP STORY: FUTURE WELL COMMUNITIES

Chronic diseases like diabetes are the leading cause of death in the U.S., and as with other health challenges, low-income communities and communities of color are disproportionately impacted. These health disparities are not simply a medical problem to solve. People's health is too often determined by where they live, and the social and economic challenges they face in their daily lives. Often referred to as the [social determinants of health](#), these factors include poverty, racism and limited access to healthcare, education and opportunity.

We created our **Future Well Communities** program in 2019 to tackle these barriers and advance health equity through a community-based approach. Focused on addressing the diabetes crisis in Stockton, Calif., this work centers on the powerful idea that public health is all about personal health -- meeting people where they are, and providing targeted solutions to the complex, individual health barriers they face in their day-to-day lives.

By delivering services such as medical transportation, a "food as medicine" Healthy Food Rx program, culturally-relevant health education, and a stronger pipeline of healthcare and community workers, we're investing in systems to connect people with the individualized care they need -- so they can live healthier. Find out [more](#).

IN CASE YOU MISSED IT

INNOVATING FOR ACCESS AND AFFORDABILITY



New Global Initiative Tackles the Complex Issues of Malnutrition

Through the creation of the Abbott Malnutrition Solution Center and partnerships with experts and communities globally, we aim to identify, treat and prevent malnutrition for the most vulnerable populations in the world, including mothers, infants and young children, aging adults, and people without access to good nutrition. [more](#)



What's Next for CGM Tech and Diabetes Care

A Q&A with Abbott's Joel Goldsmith dives into the continuous glucose monitoring (CGM) technology that sets the FreeStyle Libre portfolio apart, with details on access and affordability, why you shouldn't overlook the manufacturing process, and the future role of machine learning in managing diabetes. [more](#)



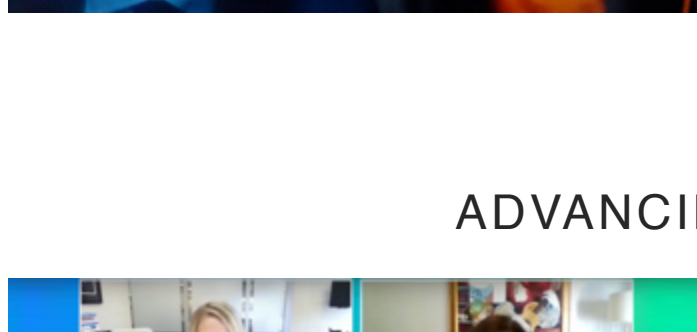
The Future of Testing and Healthcare Innovation

In a blog for Aspen Ideas Health, Abbott's Andrea Wainer shared views on what we've learned from the COVID-19 pandemic and the significant opportunities for rapid testing to address many health challenges around the world. [more](#)



NeuroSphere™ Virtual Clinic Expands Rural Access

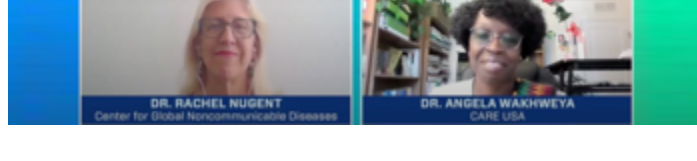
For people in rural areas, a trip to see a specialist can sometimes be an all-day endeavor. Now, with NeuroSphere™ Virtual Clinic, people can visit remotely with their doctor to prescribe and adjust treatment, with secure, in-app video chat and remote programming for Abbott's neuromodulation technologies. [more](#)



A View Into Heart Care Like Never Before

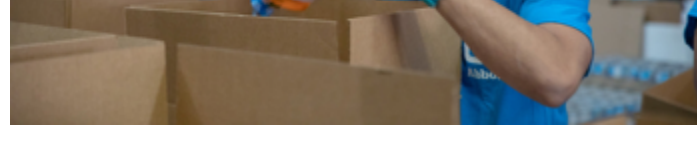
Abbott's Dr. Nick West explains how our technologies give doctors a 3D view of what's happening inside the heart, with artificial intelligence (AI) guiding the way. This makes technology more accessible by making it simpler and easier to use -- which allows doctors to help more people in more places. [more](#)

ADVANCING EQUITY



Addressing the Impact of Chronic Diseases on Communities in Crisis

Today, more than 82 million people around the world are displaced from their homes. Chronic diseases account for 3 of 4 deaths globally. Abbott's Melissa Brotz recently joined leaders from CARE and RTI International to discuss these converging issues -- and a unique partnership in the Philippines to help. [more](#)



New Initiatives Help Build Year-Round Resilience

Building on our longstanding work to help communities prepare for hurricane season in the U.S., we recently launched a new strategy to strengthen the year-round resilience of food banks and community health clinics in high-risk regions -- to better prevent and mitigate the impact of hurricanes on local communities. [more](#)

WORKFORCE OF TOMORROW



Podcasts: Shaping the Future of STEM

Our Shaping the Future of STEM podcasts bring together female interns and professionals to talk STEM. One recent episode featured Dr. Beth McQuiston speaking with intern Jomi Babatunde-Omoya about resilience and career success; another featured Betsy Wille speaking with intern Diya Iyer on finding support when studying STEM. [more](#) and [more](#)



STEM Interns: Give Us a Chance to Shatter Glass Ceilings

From curing disease to addressing climate change, people with experience in STEM will be critical in solving the world's problems. Abbott STEM interns Jomi Babatunde-Omoya and Fiona Harley recently shared views in Newsweek on why we need to empower a new generation of STEM leaders. [more](#)



Fast Company Recognizes Innovative Teamwork

When the world needed COVID-19 tests that would offer fast, reliable results, Abbott employees formed a global, cross-functional team to respond -- creating our award-winning BinaxNOW rapid COVID-19 test and its companion app, NAVICA. Now, Fast Company is recognizing this team for their innovative collaboration. [more](#)

SPOTLIGHT



UNIVERSITY OF THE PACIFIC

University of the Pacific is California's oldest university, founded July 10, 1851. With campuses across Northern California in Sacramento, San Francisco and Stockton, the university's mission is to provide a superior, student-centered learning experience integrating liberal arts and professional education and preparing individuals for lasting achievement and responsible leadership in their careers and communities.

An important part of their work is the education and training of healthcare workers and social workers -- two professions that see first-hand the devastating impact of health disparities in Stockton, where nearly 60 percent have diabetes or prediabetes.

As part of our Future Well Communities program, the Abbott Fund and University of the Pacific teamed up to address this issue by creating four new educational programs: two diabetes certificate programs for clinicians and non-clinicians to equip them to better understand and manage diabetes, and a diabetes track within both nursing and social work degree programs. The certificate programs and social work degree program have already launched, and the nursing degree program is set to launch in 2022.

The partnership is also offering scholarships to select students committed to living and working in Stockton post-graduation, and providing training placements for students to gain first-hand experience while ensuring local workforce needs are met -- by people who are from the communities they serve.

The partnership couldn't have come at a better time, as people with diabetes and other preexisting conditions have an increased risk of more serious complications from COVID-19. For more information on the partnership, visit the [Pacific website](#) and watch this [video](#).

WHAT'S NEXT

- On Nov. 9, our Future Well Kids program teams up with Discovery Education to launch the "♥ Your Heart" virtual field trip. Two Abbott STEM student interns will explore the fascinating structure and function of the heart with Abbott scientists and doctors -- and join 3x U.S. Olympian Lolo Jones to learn how to keep your heart healthy.
- We're looking forward to taking part in both the global [Shared Value Leadership Summit](#) and the [Africa Shared Value Leadership Summit](#) in November, with Abbott's Dr. Chad Malone discussing the role of data in advancing health equity, and Monica Sanders discussing gender equality and inclusion in healthcare.



You are receiving this email because you have subscribed to the It All Adds Up newsletter from [www.abbott.com](#). To update your subscription preferences, please follow the links below.

[SUBSCRIBE](#) | [UNSUBSCRIBE](#) | [PRIVACY POLICY](#) | [TERMS & CONDITIONS](#) | [CONTACT](#)
 ©2021 Abbott. All Rights Reserved.

Unless otherwise specified, all product and service names appearing in this Newsletter are trademarks owned by or licensed to Abbott, its subsidiaries or affiliates. No use of any Abbott trademark, trade name or trade dress in this newsletter may be made without the prior written authorization of Abbott, except to identify the product or services of the company.

Abbott | 100 Abbott Park Road | Abbott Park, IL 60044 | (224) 667-6100